

Segm. Dist.

$$|a-b| = \text{distance pt. 1}$$

defn absolute value is

how far # is away from zero

-7 and 4
find dist.

$$d = |a - b|$$

$$d = |(4) - (-7)|$$

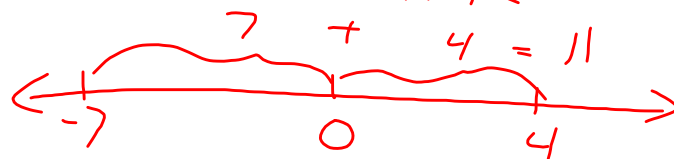
$$d = |4 + 7|$$

$$d = |11|$$

} formula
} subst
} Given

P
E
A
S

number line



same problem
 $a = -7$ $b = 4$

$$d = |a - b|$$

$$d = |(-7) - (4)|$$

$$d = |-7 - 4|$$

$$d = |-11| = 11$$